



Kool°P series.

Thermoelectric cooling for medical and laboratory analysis technology and for complex laser systems in the low power range.

More cooling capacity. In addition to a standard cooling capacity of 350 W, the booster variant enables a net cooling capacity of up to 600 W at a temperature boost of 0 Kelvin.

Best equipped. Excellent sensor technology as well as controllability.

Reliable. High temperature stability with quiet operation at the same time.

Variant. Optionally available as 19" rack or standalone solution.

Sustainable and future-proof. Refrigerant-free cooling solution with compact dimensions.

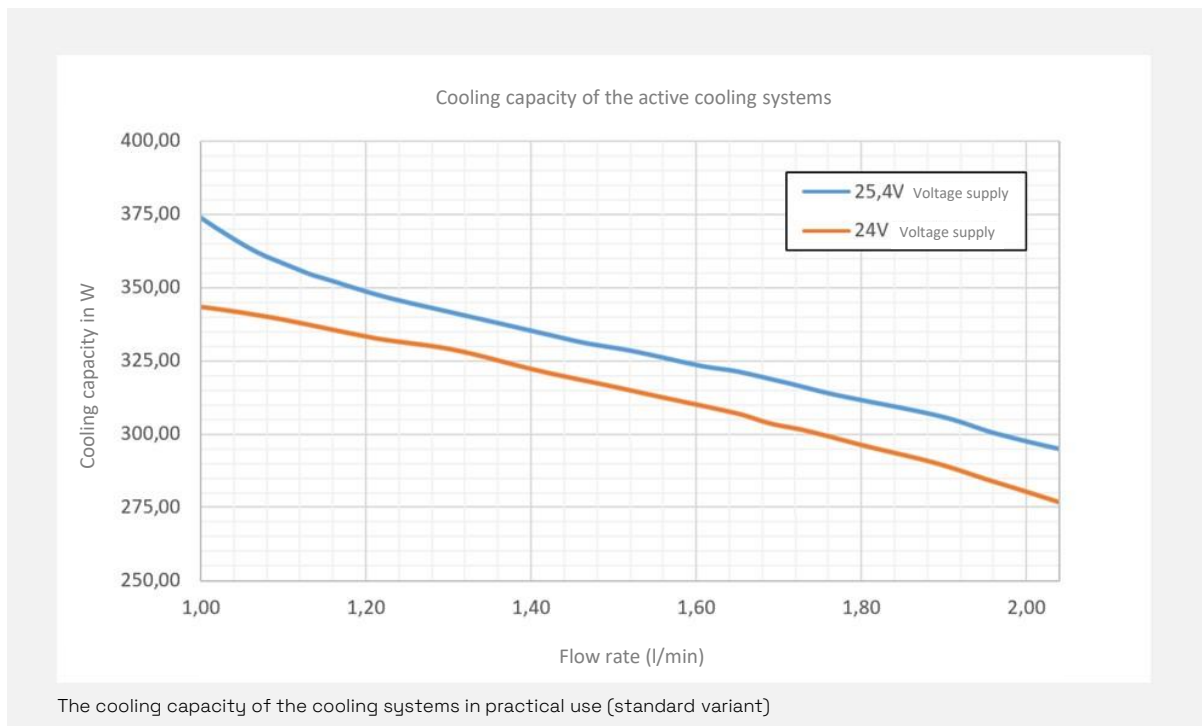
Low maintenance and low vibration cooling system. Vibration-free due to the use of Peltier technology.

Future-proof cooling solution in compact design.

For medical and laboratory analysis technology as well as for complex laser systems in the low power range.

The thermoelectric cooling solutions of the Kool°P series from Riedel Kooling offer a high cooling capacity with nevertheless compact dimensions. This makes them ideal for use in medicine and laboratory analysis technology, but also for cooling complex laser systems in the low power range.

The heart of the low-vibration cooling systems is the Peltier element. The net cooling capacity in the standard version is 350 W. If more cooling capacity is required, the booster variant with up to 600 W net cooling capacity is used. The Kool°P cooling systems also offer excellent sensor technology as well as controllability.



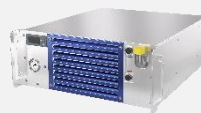
The best-equipped cooling solutions offer high temperature stability and are optionally available as a plug-in variant for a 19" rack or classically as a standalone solution.

Dimensions and equipment.



Kool°P 0.35 Standalone

Cooling capacity:	350 W / 0°Δt
Dimensions:	w327,5 x d504 x h349 (mm)
Power supply:	24V DC
Volume flow:	3,5l / min
Supply pressure:	max. 1,6 bar dep. on pump equipment



Kool°P 0.35 Rack

Cooling capacity:	350 W / 0°Δt
Dimensions:	w482,1 x d588 x h177,8 (mm)
Power supply:	24V DC
Volume flow:	3,5l / min
Supply pressure:	max. 1,6 bar dep. on pump equipment



Sales Riedel Kooling

Glen Dimplex Deutschland GmbH
Am Goldenen Feld 18
95326 Kulmbach
Germany
T + 49 9221 709-555
info@riedel-kooling.com

24/7 Service

T + 49 9221 709-545
service@riedel-kooling.com

Visit:
riedel-kooling.com